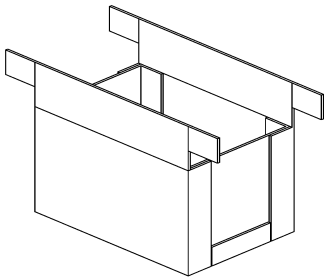
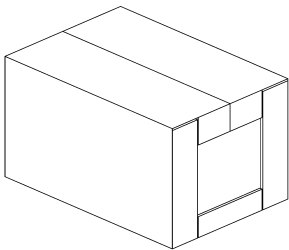
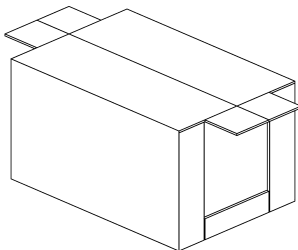


Continuous Motion Side Flange Sealer

Model SS-231



Internal Flange Bliss Box
with Side Seal Flanges



The SS-231 features:

- **Quick Changeover**
- **Compact Design**
- **Stainless Steel Paint Finish**
- **Quality Components & Parts**
- **Tubular Steel Frame**
- **Low Air Usage**
- **Low Maintenance**
- **Minimum Moving Parts**
- **UL Approved Electrical Control Panel**
- **Quality Moen Glue System**

The Moen SS-231 Side Flange Style Sealer addresses the flagging and skewing issues commonly associated with competitive continuous motion sealers.

Specifically designed urethane wheels apply downward pressure on the top flaps to square the top of the box while initiating positive folding and gluing of the side flanges. Side urethane wheels conform to material irregularities while keeping firm pressure for a positive glue bond — without damaging the case.

Ruggedly built, the Moen SS-231 Side Flange Style Sealer is capable of speeds of up to 35 cases pre minute. A high-speed option (up to 45 c.p.m.) is available for some box sizes and designs.



Quality Corrugated Packaging Equipment

12333 East Los Nietos Road, Santa Fe Springs, CA 90670

(562) 946-6381 ■ FAX (562) 946-3200

Email: sales@moenindustries.com

Web Site: www.moenindustries.com



Continuous Motion Side Flange Sealer

Model SS-23 I

Compressed Air Consumption

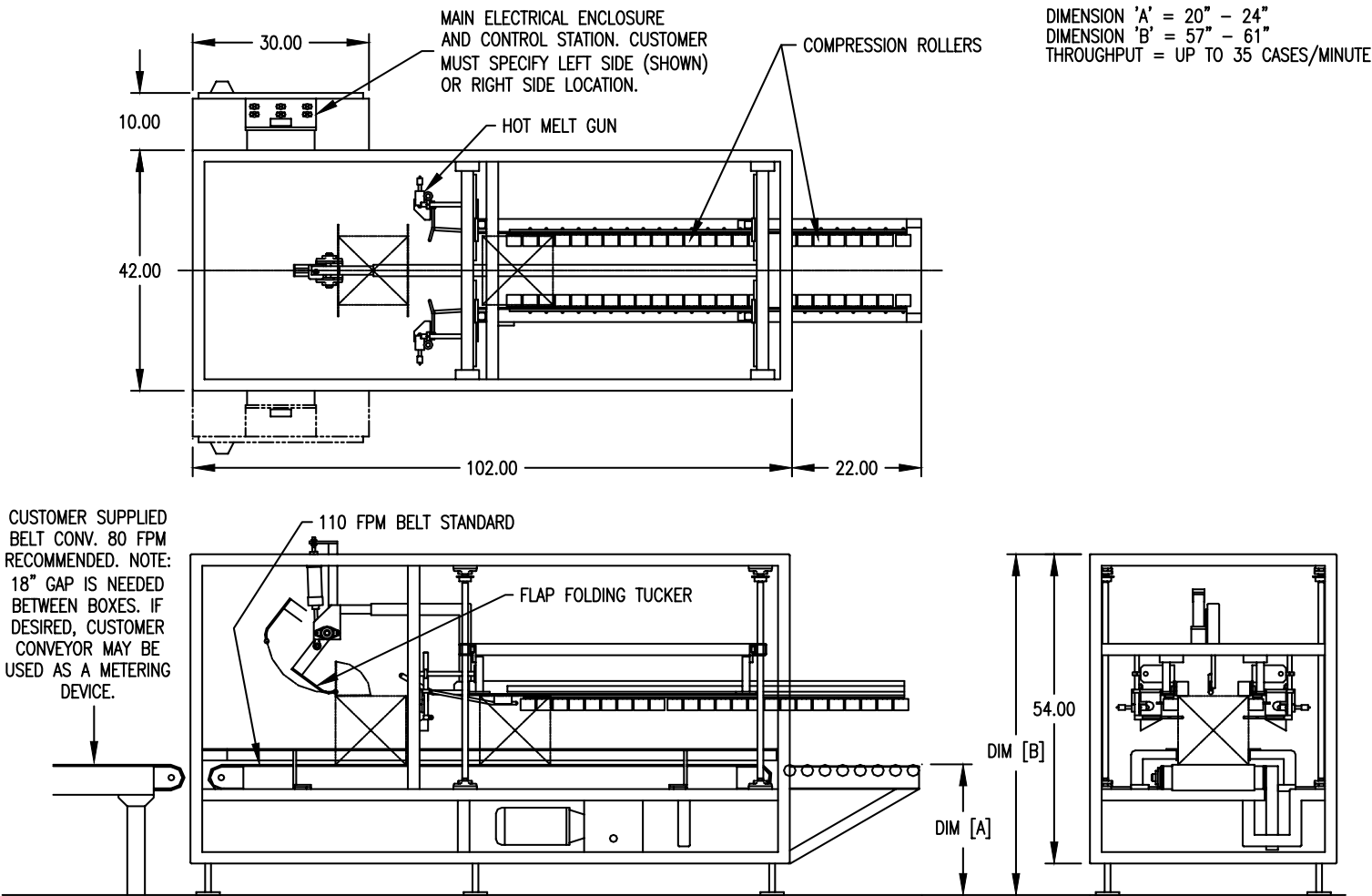
Air usage per cycle in SCFM .118

Electrical Requirements

Standard	Optional
230 VAC	460 VAC
3 Phase	3 Phase
10 Amps	6 Amps

Box I.D.

	Min	Max
Length (between ends)	7"	18"
Width	8"	20"
Depth	4"	14"



DIMENSION 'A' = 20" - 24"
DIMENSION 'B' = 57" - 61"
THROUGHPUT = UP TO 35 CASES/MINUTE

Rate of Production: Up to 35 c.p.m.



Quality Corrugated Packaging Equipment